



# Shree Balaji WIND PARK™

3,4,5&7 BHK  
*Page-3 Lifestyle Apartments*



**Windpark: "The Best Residential Project"**  
under luxury segment  
in Ahmedabad  
by 



**RESIDENTIAL REAL ESTATE DEVELOPER OF THE YEAR**  
Ahmedabad-BALAJI GROUP by Brands  
Academy, New Delhi  
2015

EXPERIENCE  
THE FUTURE OF  
RESIDENTIAL LUXURY





## Shree Balaji WIND PARK™

### *3,4,5,&7 BHK Page-3 Lifestyle Apartments*

Located just 15 minutes away from Thaltej, Shree Balaji WindPark is where your dreams find their home. Lush green environment and wide open spaces keep you connected to the nature while amenities like swimming pool, high tech American Security Systems and health club ensure you are living a lavish urban lifestyle that only a chosen few get to experience. WindPark gives you the Page 3 lifestyle that others just dream of.

- The Windpark's concept is inspired from the renowned architectural brilliance of Barcelona, Spain
- Windpark offers 6 Blocks/Towers with 13 storey in each block, totaling 249 units
- It offers columnless (pillarless) construction, with a height of 10.5 – 11 ft which gives each flat a grander look
- The building exteriors are constructed in sun breaker design, with a double wall structure breaking direct sun light
- UPVC noise proof, storm proof, weather proof as well as strong insulation windows
- The moulded glass club house design is inspired from Bird Nest Stadium, China
- Wide distance between each blocks

# More than 38 amenities for the first time in one residential scheme in Ahmedabad\*

1



Internationally Designed Moulded Glass Club House

2



Mini Golf Course

3



1 Lac sq. ft open space with No Vehicle Zone

4



German Home Automation System

5



Wi-Fi Zone in Entire Campus

6



Beautiful Garden

7



Senior Citizen Park

8



Health Club

9



Sun breaker RCC design

10



Automatic Entry Gate

11



Yoga/Meditation Room

12



Aerobics Facility



# More than 38 amenities for the first time in one residential scheme in Ahmedabad\*

14



Library

15



Video Door Phones

16



Badminton Court

17



Basketball Court

18



Tennis Court

19



Pool Table

20



Table Tennis

21



Chess & Carom

22



Cricket Pitch

23



Skating Rink

24



Highly Secured Area with 24 Hrs CCTV Camera Security

25



Separate Visitor's Parking inside the premises

26



Swipe Card Entry for Car Parking in the Basement

27



Separate Safe Play Area for Children

28



Two Elevators with Power Backup in each Block

29



Designer Compound Wall all around the Building

30



Dedicated Car Wash Area

31



Pickup and Drop Zone for School Children at Main Gate

32



24 Hrs. Water Supply with pressurized water pump

33



Attractive Foyer at the Entrance

34



Fountains

35



Jogging Track

36



Sculpture

37



Concrete Road with Designer Footpath and Plantation along Roadside



Driving Distance  
**15 MIN.**

Driving Distance  
**15 MIN.**

## CENTRALLY LOCATED TO

### SCHOOLS & COLLEGES

- Nirma University
- Hiramani School
- Gurukul
- Divine Child Intl. School
- Petroleum University
- IIT Gandhinagar
- DPS School
- GEMS Genesis Intl. School

### TEMPLES

- Vaishnodevi
- Balaji
- Hanuman

### HOSPITALS

- Apollo
- Civil(Gota)
- Zydus Cadila
- CIMS

### CONNECTING AREAS

- Ring Road
- S.G Highway
- Gandhinagar
- Airport
- Gift City





# 3 BHK



38



Volleyball Court

39



UPVC Windows



# Shree Balaji WIND PARK™

3,4,5,&7 BHK  
Page-3  
Lifestyle Apartments

Site: Nr. Vaishnodevi Circle, S.G. Highway

Blocks	Rooms
● A, B, E	3 Bed Room
● C	4 Bed Room
● F	5 Bed Room
● D	5 Bed Room & 7 Bed Room Pent House







Actual sample house images





Actual sample house image

# Salient Features (3, 4, 5, BHK)

- Open plan with large living/dining area opening to verandah
- All bedrooms with large attached bathroom/dressing area
- Full Height UPVC sliding windows
- Sandwich Granite Platform with SS sink
- Combination of Artificial Italian Marble, Wooden flooring & full body vitrified tiles flooring
- 32 mm veneered Flush Doors with SS Mortise Lock with Handles
- 3-Phased Concealed ISI Copper Wiring with premium modular switches
- Video door phone with intercom facility to Main Gate Security
- Pressurized water supply
- Allotted Parking spaces in basement and ground level
- Beautiful garden view from every apartment
- Exclusive space provision for AC ODU for each Apartment
- Garbage disposal system from Wash Area / Servant Room

## Common Features\*:

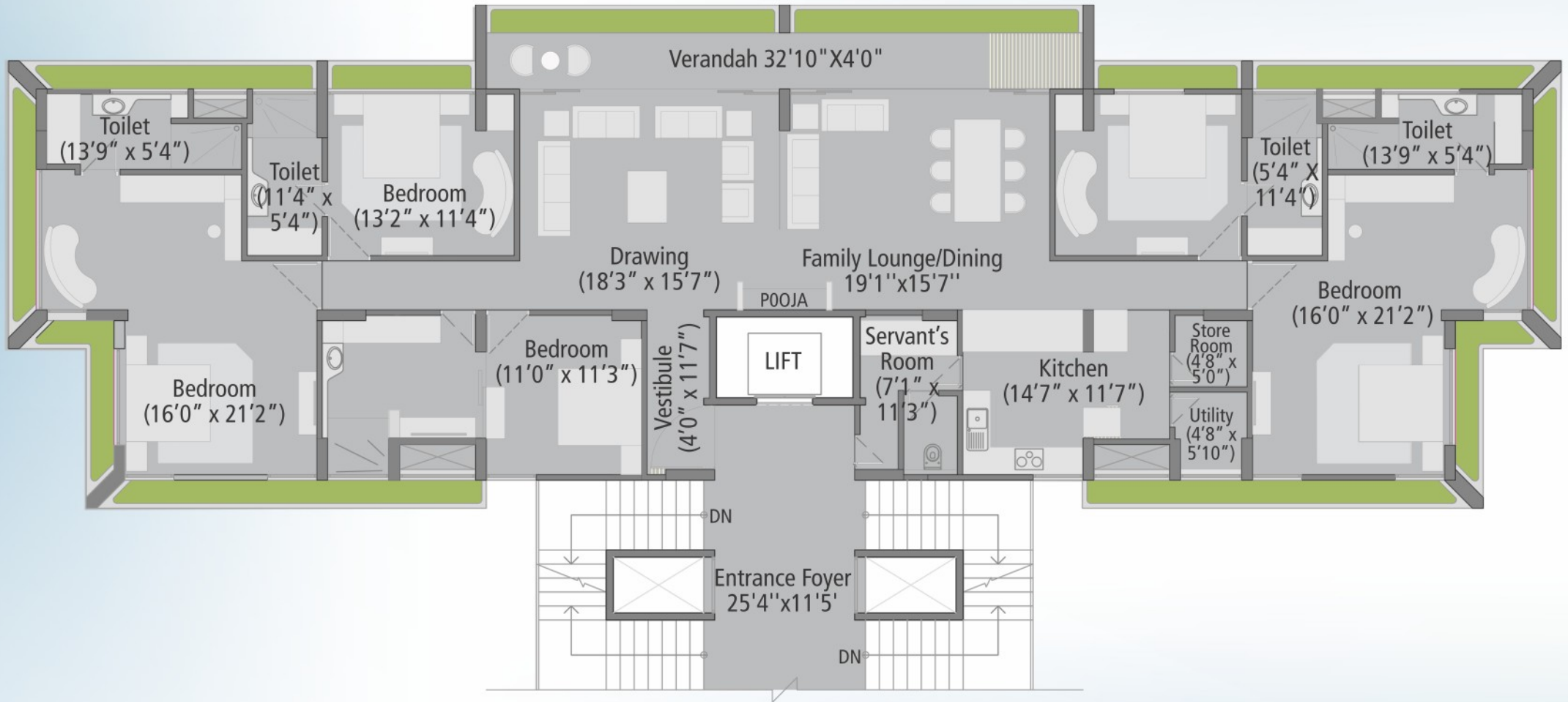
- Each Apartment with Open View
- Landscape and Garden Designed by Dubai Architects
- Exclusive Foyer Design of each Block with Private Sitting Area for Visitors
- 50 to 55 Feet Wide Distance between each Block
- 8 mtr. Wide Road for easy mobility of vehicles in the premises
- Home automation system that can control or keep a watch on your home using ipad / iphone / android from anywhere (4,5 & 7 BHK only)
- Wooden flooring in all bedrooms & Italian flooring in drawing room
- Modular Kitchen
- Split AC in all Bedrooms
- Kohler fittings in bathrooms & Shower Panels
- Separate Servant Room with Separate Toilet and Separate Entry in 4,5,7 BHK
- Escalators opening directly in the Personal foyer of Flat in 5 & 7 BHK
- Each Apartments have 11 Ft. Clear Height
- Each Apartment has large space in Drawing, Dining, Kitchen, Balcony to Living Area, giving feeling of grandness



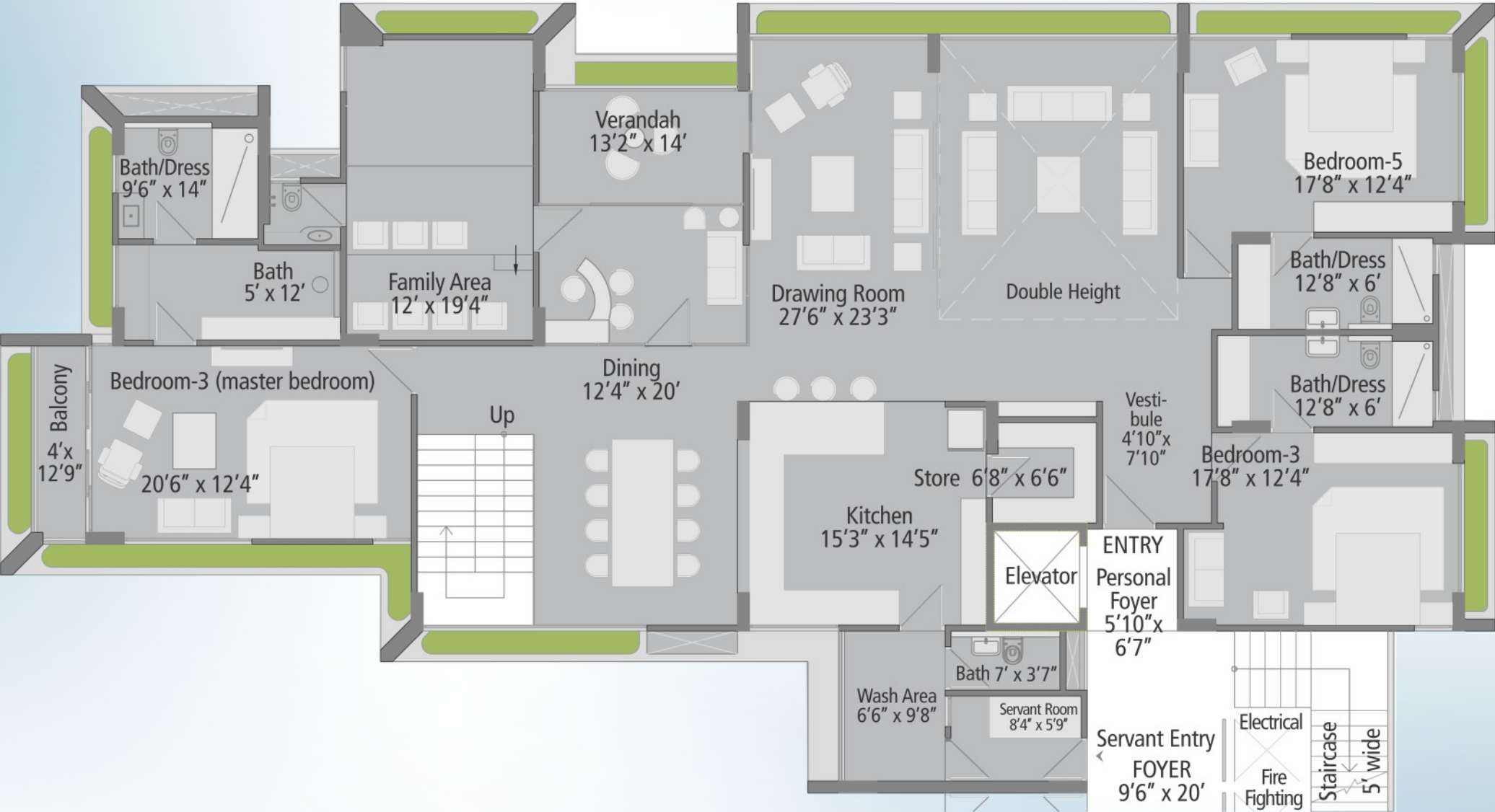
# 5 BHK



# 5 BHK



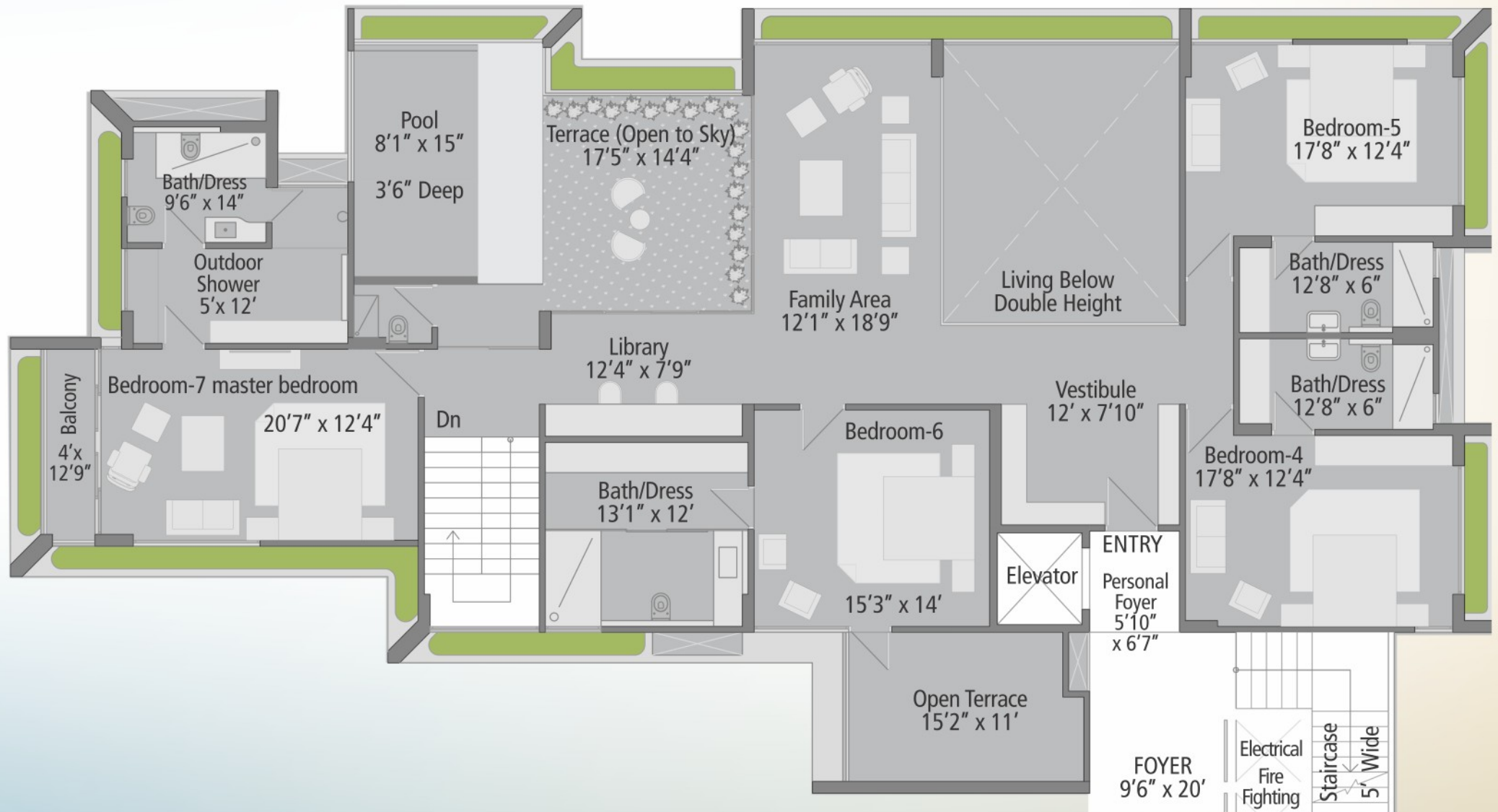
# 7 BHK (Lower Level)



# Salient Features

# 7 BHK (Upper Level)

- Open plan with large double height Living/Family/Dining area
- Double height glass facade of Living/Dining area with functionally well designed sun-breakers
- All bedrooms with large attached bathroom/dressing area
- Full height UPVC Sliding Windows • Granite Platform with SS sink
- Ready to Paint walls • 32 mm Veneered Flush Doors with SS Mortise Handles
- Combination of Artificial Italian Marble, Wooden Flooring & full body vitrified tiles flooring
- Wooden Main Door







Shree Balaji  
**WIND**™  
**PARK**

3,4,5,&7 BHK  
*Page-3 Lifestyle Apartments*





Actual sample house images







 **Location Map**

# Shree Balaji **WIND PARK**<sup>TM</sup>

Site:  
Nr. Vaishnodevi Circle, S.G. Highway

\* This brochure is just for reference purpose. It is not a legal document.



Call: 9227 888 257 | 9227 888 270

Corporate Office: Shree Balaji Mall, 4th Floor, Nr. D Mart, Visat-Gandhinagar Highway, Motera, Ahmedabad  
Ph: 079 - 27570667, 27570999 | Email: inquiry@shreebalajiconstruction.com

[www.shreebalajiconstruction.com](http://www.shreebalajiconstruction.com)

ISO 9001 : 2008 • ISO 14001 : 2004 • OHSAS 18001 : 2007 Certified Company